



TUI BLUE

Side

en

Concept & Factsheet

General Information

Owner	Demirci Turistik Tesisleri İş. A.Ş.
Category	5 Stars Hotel
Year of construction	2009
Year of renovation	xxxx
Board	Ultra All Inclusive
Season	12 Months
Total Area/Arazi	16.000 m2
Capacity	480 Pax

Contact Information

Distances	Side 7 Km., Airport 60 Km., City Center Antalya 72 Km
Address	Evrenseki Mevkii / SIDE / ANTALYA
Web site	www.emirhotels.com
E-mail	info@emirhotels.com
Telephone	00 90 242 763 03 00
Fax	00 90 242 763 03 43
Building	4 Blocks / 4 Floor

Room Distribution / 234 Rooms

Standart Room	187
Deluxe Room Seaview	16
Deluxe Room Landview	4
Junior Suite Partial Seaview	13
Junior Suite Seaview	7
Superior Suite	6
King Suite	1





Standart Room

Square Meter 35 m²

Capacity Min 1 Pax - Max 3 Pax

Bed Type Twinbed (extra bed)



General Characteristics

- Seaview or Partial Seaview or Landview
- French Bed/ Twin Bed
- Balcony or Terrace
- Parquet Floor



Room Equipment

- Central air condition
- Direct dial telephone
- Minibar
- Safe
- 1 LCD TV with satellite
- Coffee and tea set with coffee and tea varieties
- WiFi internet access



Bathroom

- Shower, WC
- Hairdryer
- Telephone in Bathroom





Deluxe Room Seaview

Square Meter 35 m²
Capacity Min 1 Pax - Max 3 Pax
Bed Type Frenchbed (extra bed)



General Characteristics

- Seaview
- French Bed
- Balcony or Terrace
- Parquet Floor



Room Equipment

- Central air condition
- Direct dial telephone
- Minibar
- Safe
- 1 LCD TV with satellite
- Coffee and tea set with coffee and tea varieties
- WiFi internet access



Bathroom

- Shower, WC, Bathtub
- Hairdryer
- Telephone in Bathroom



DELUXE ROOM
SEAVIEW



Deluxe Room Landview

Square Meter	35 m ²
Capacity	Min 1 Pax - Max 3 Pax
Bed Type	Frenchbed (extra bed)



General Characteristics

- Landview
- French Bed
- Balcony or Terrace
- Parquet Floor



Room Equipment

- Central air condition
- Direct dial telephone
- Minibar
- Safe
- 1 LCD TV with satellite
- Coffee and tea set with coffee and tea varieties
- WiFi internet access



Bathroom

- Shower, WC, Bathtub
- Hairdryer
- Telephone in Bathroom



DELUXE ROOM

LANDVIEW



Junior Suite Partial Seaview

Square Meter	50 m ²
Capacity	Min 1 Pax - Max 3 Pax
Bed Type	Frenchbed (extra bed)



General Characteristics

- Partial seaview
- French bed
- Room with lounge corner
- Parquet and carpet floor
- Balcony



Room Equipment

- Central air condition
- Direct dial telephone
- Minibar
- Safe
- 1 LCD TV with satellite
- Coffe Machine
- Coffee and tea set with coffee and tea varieties
- WiFi internet access



Bathroom

- Shower, WC, Bathtub
- Hairdryer
- Telephone in Bathroom





Junior Suit Seaview

Square Meter 50 m²
Capacity Min 1 Pax - Max 3 Pax
Bed Type Frenchbed (extra bed)



General Characteristics

- Seaview
- French bed
- Room with lounge corner
- Parquet and carpet floor
- Balcony



Room Equipment

- Central air condition
- Direct dial telephone
- Minibar
- Safe
- 1 LCD TV with satellite
- Coffe Machine
- Coffee and tea set with coffee and tea varieties
- WiFi internet access



Bathroom

- Shower, WC, Bathtub
- Hairdryer
- Telephone in Bathroom



JUNIOR SUIT

SEAVIEW



Superior Suit Room

Square Meter 40 m²
Capacity Min 1 Pax - Max 3 Pax
Bed Type Frenchbed + Twinbed



General Characteristics

- Seaview
- French bed / Twin bed
- Balcony
- Parquet and carpet floor



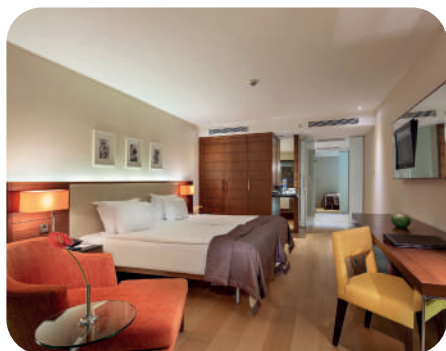
Room Equipment

- Central air condition
- Direct dial telephone
- Minibar
- Safe
- 2 LCD TV with satellite
- Coffee and tea set with coffee and tea varieties
- WiFi internet access



Bathroom

- Shower, WC
- Hairdryer
- Telephone in Bathroom





King Suit Room

Square Meter 90 m²

Capacity Min 1 Pax - Max 3 Pax

Bed Type Frenchbed



General Characteristics

- Seaview
- French bed
- Balcony
- Parquet and carpet floor
- Seating group



Room Equipment

- Central air condition
- Direct dial telephone
- Minibar
- Safe
- 1 LCD TV with satellite
- Coffee and tea set with coffee and tea varieties
- WiFi internet access

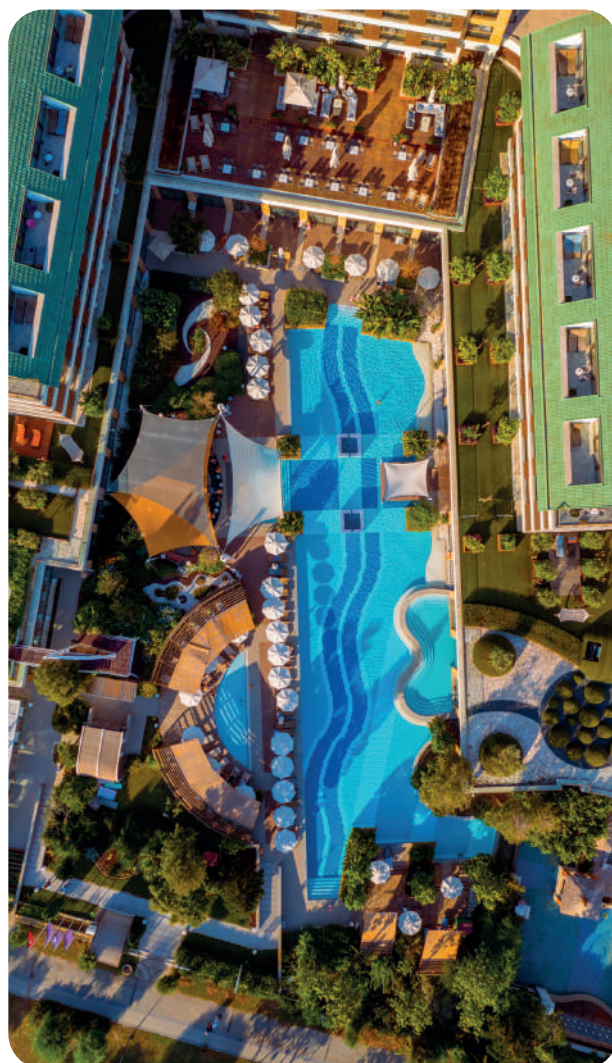


Bathroom

- Shower, WC
- Hairdryer
- Telephone in Bathroom



KING SUIT ROOM



Swimming Pool [more info](#)

Outdoor Main Pool	927 m2, 140 cm (Winter term closed)
Indoor Pool	217 m2, 140 cm
Whirl Pool	30 m2, 40 cm
Beachtowel	(Free of Charge)
Umbrella	(Free of Charge)
Sun Bed	(Free of Charge)
Mattress	(Free of Charge)

Beach

Private Beach
Fine Sandy

Sea

Fine Sandy
Shallow Sea



Restaurants [more info](#)

Main Restaurant - Outdoor

Open Buffet International

Main Restaurant - Indoor

Open Buffet International

Culinarium A'la Carte Restaurant

(Reservation) International Cuisine

Defne A'la Carte Restaurant

(Reservation) Mediterranean Cuisine

Blue Mare A'la Carte

(Reservation) Middle of Mai – End of October
Winter term closed

Sea Food / at the Beach



During the stay, A la Carte usage is available once for stays of 0–13 nights, twice for stays of 14–20 nights, and three times for stays of more than 21 nights. **2ND USE 25.-EURO**

Bars [more info](#)

Nar Cafe - Spa 09:00 - 18:00

Pool Bar 10:00 - 23:30 (**Winter term closed**)

Beach Bar 10:00 - 18:00 / 23:00 - 02:00 (**Winter term closed**)

Lobby Bar 09:00 - 23:30

Romance Bar 20:30 - 23:30 (**Winter term closed**)

Century Bar 20:30 - 23:30 (**Summer term closed**)

Patisserie 11:00 - 18:00



Animation (Free) [more info](#)

Evening Show (3 Days)

Animation (6 Days)

Live Music (2 Days)

Turkish Night (Once in a week)

Daily Games



Meeting Rooms

1 Meeting Room	247 m ²
1 Meeting Room	100 m ²
How Many	2 (Main Hall & Vital)
Capacity	230 Pax / 60 Pax
Equipments	Desk, Microphone, Screen (3 item headset + collar) Barcoveision

Materials are with charge



Hotel Facilities (Free)

Turkish Bath
Russian Sauna
Fin Sauna
Fitness Center
Safe (In room)
Cooking & Cocktail Course
Creative Course
Wine Tasting
Animation (Soft)
Billards
Draughts (Backgammon, Table Games)
Parking
Wifi

Hotel Facilities (Paid)

Massage (Private Company)
Peeling (Private Company)
Beauty Parlour
Hairdresser
Boutique
Market
Medical Assistance
Dry Cleaning
Laundry
Watersports (Private Company, Winter term closed)
Banquet Organisation
Bicycle
Rent A Car
Electric Vehicle Charging Station



Sporting Facilities (Free)

Tabletennis
Beachvolley (Winter term closed)
Bocca (Depending on weather)
Nordic Walking
Water Gym
Aerobic
Aquajogging (Depending on weather)
Thera Band Gymnastic
Jakkolo
Yoga
Tennis (Lighting Extra Charge)
Dance Shows
Dart - Classic

Sporting Facilities (Paid)

Football



All Inclusive

Early Morning Tea	06:00 - 07:00
Breakfast	07:00 - 10:00
Late Breakfast	10:00 - 11:00
Lunch	12:30 - 14:30
Dinner	18:30 - 21:00
Midnight Soup	23:00 - 00:00
Minibar	Everyday

Opening and closing of the outlets decided by the hotel management depending on the weather conditions

Credit Cards Acceptable

Visa	TL / EURO / USD / GBP	✓
American Express	TL / EURO / USD / GBP	✓
Mastercard	TL / EURO / USD / GBP	✓
Mail Order Form (with comission)	TL / EURO / USD / GBP	✓

